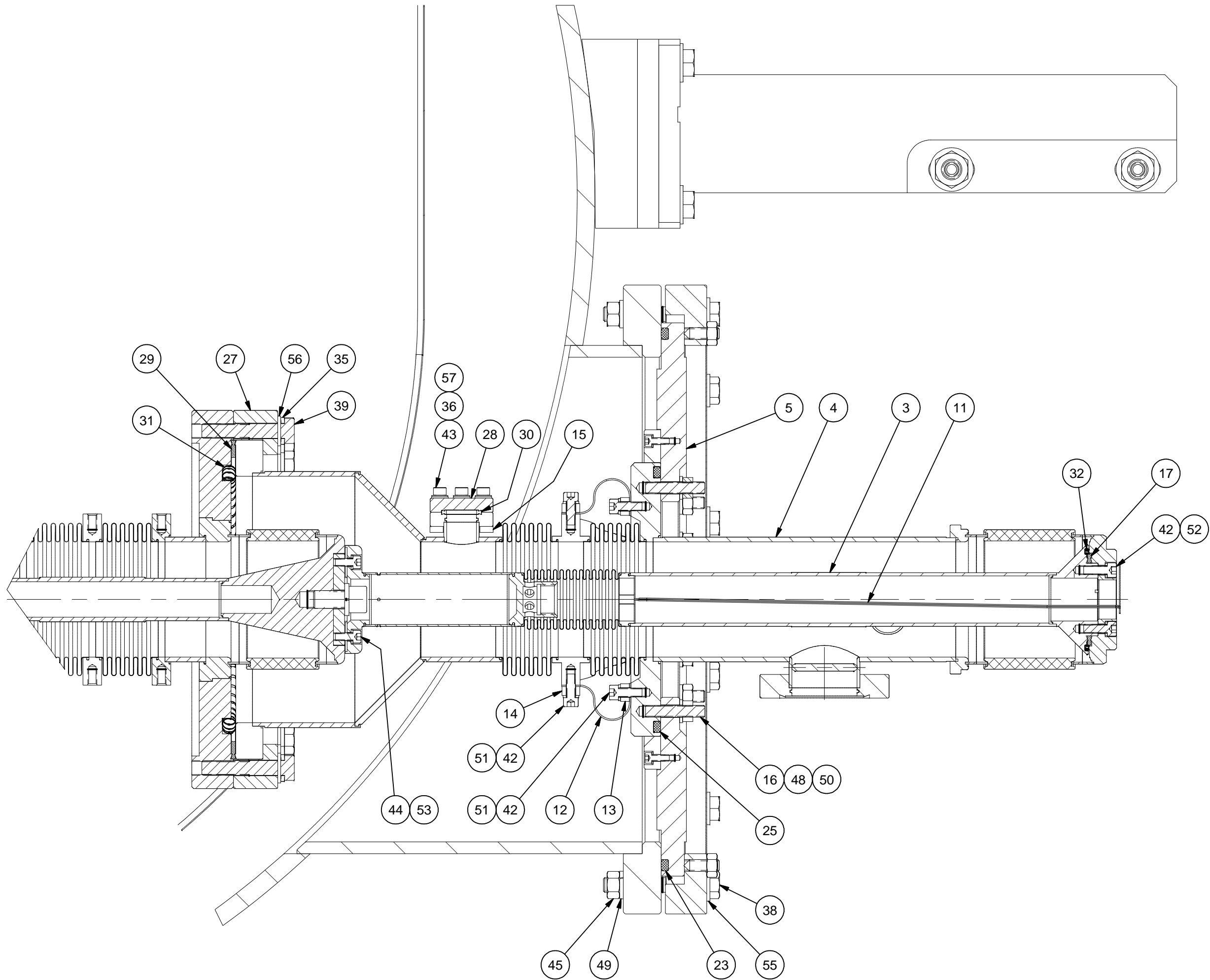
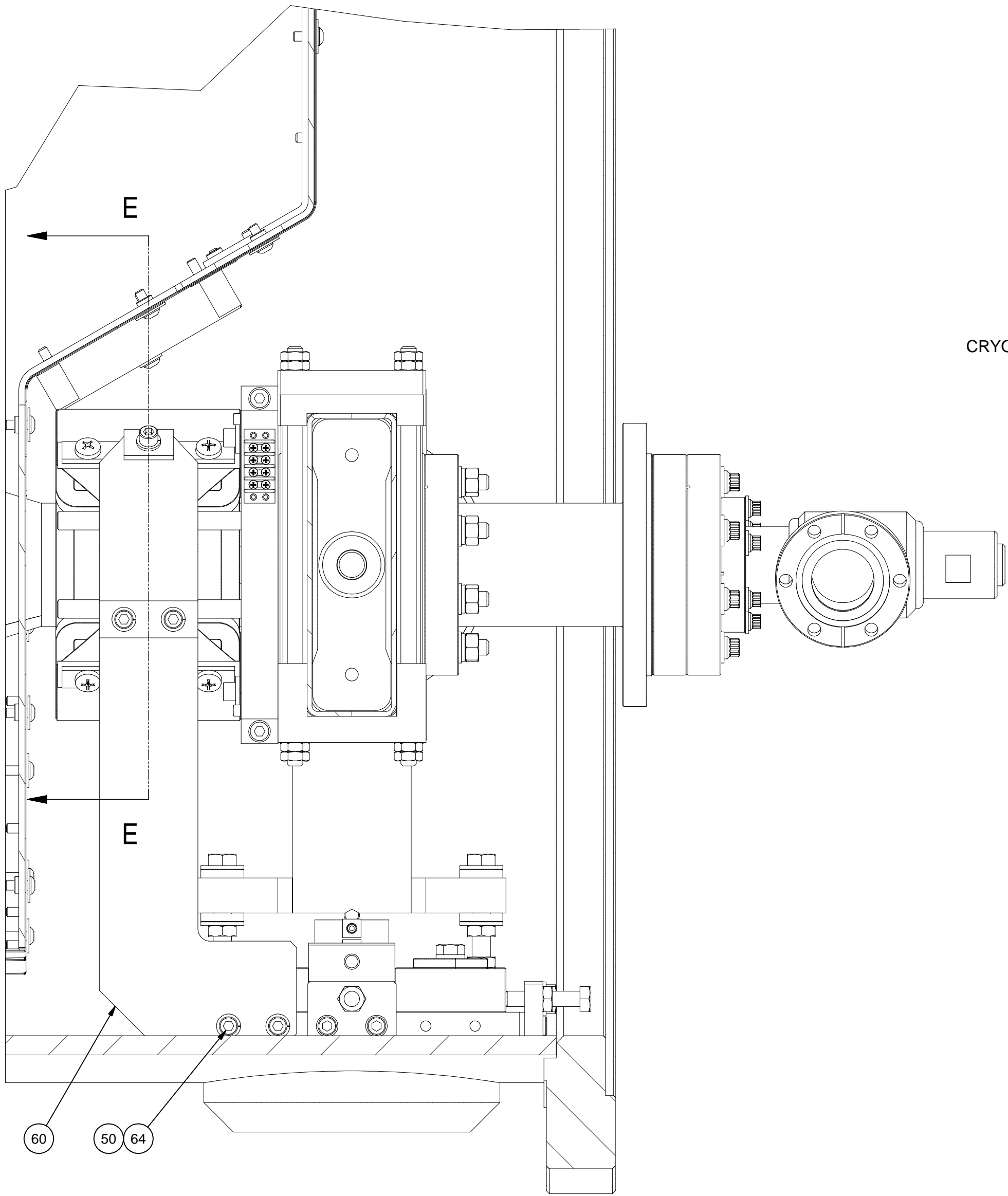




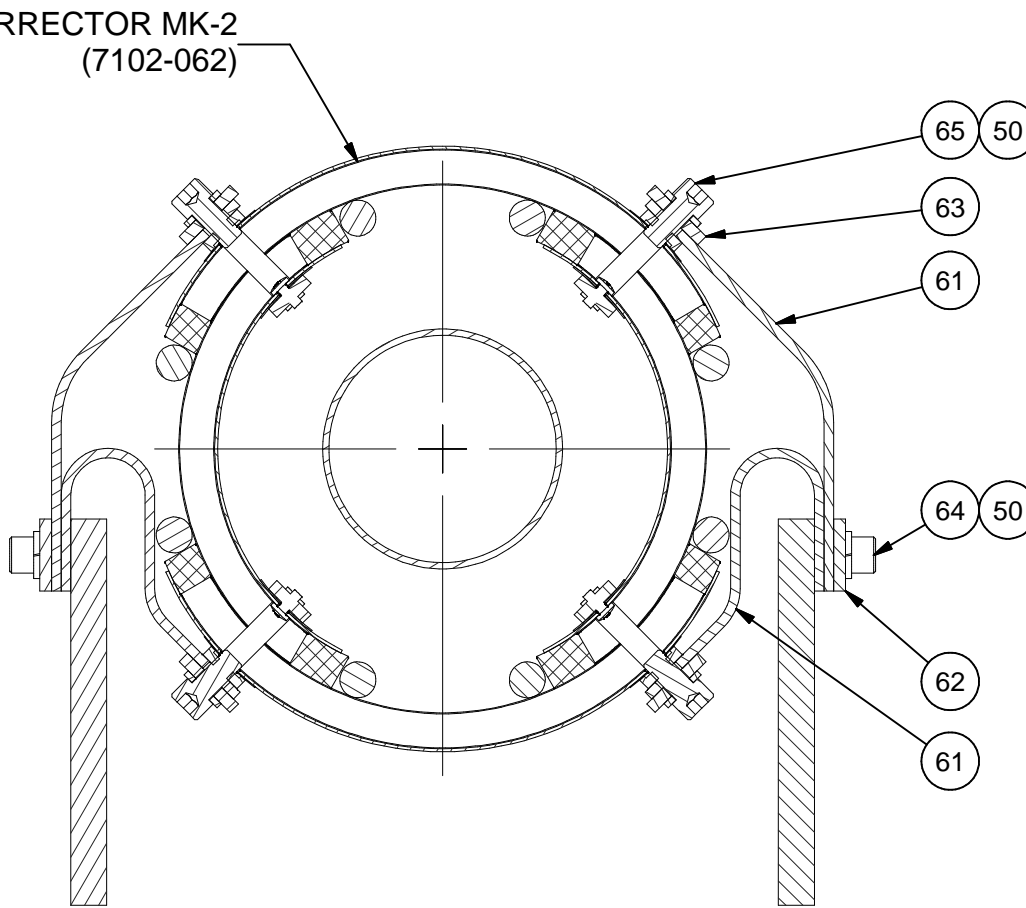
REVISIONS				
SYM.	ZONE	DESCRIPTION	DATE	APP.
A		SECTIONS D-D AND E-E ADDED.	1/23/08	VM



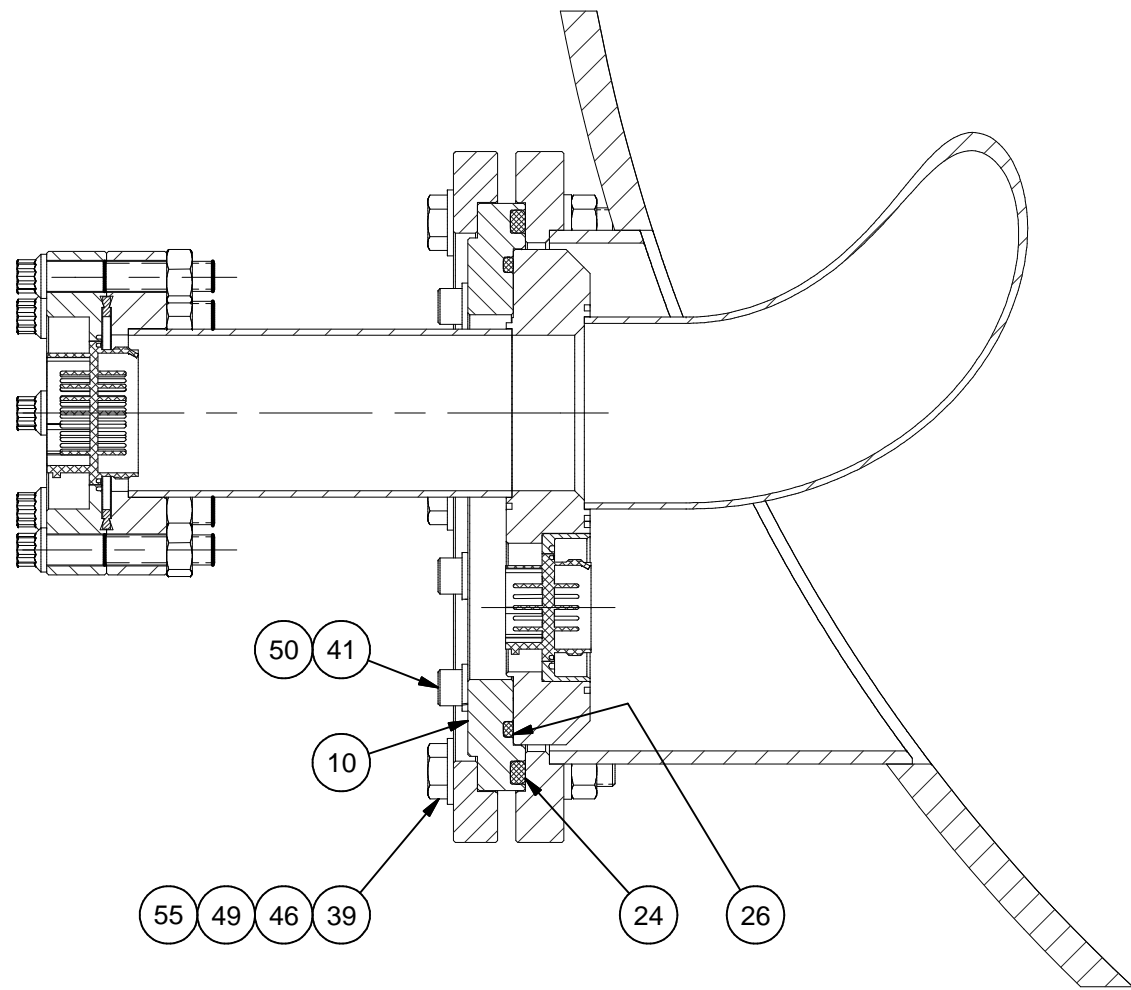
SECTION A-A  
(SEE SHEET 1)  
SCALE 1:2



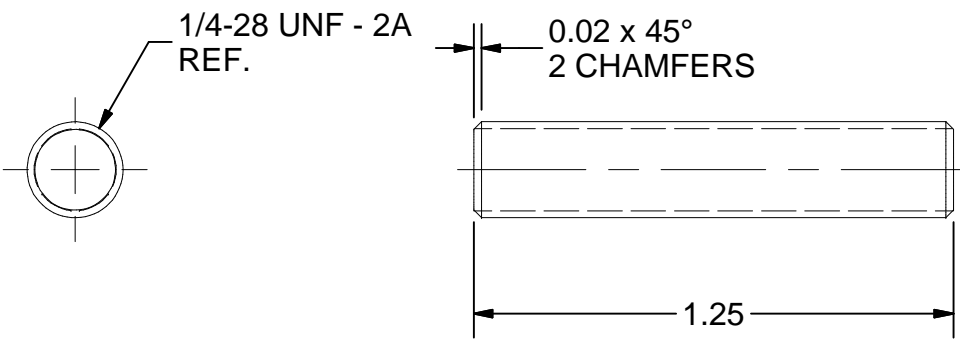
SECTION D-D  
(SEE SHEET 1)  
SCALE 1:2



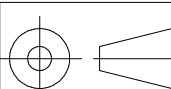
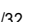

SECTION E-E  
SCALE 1:2



SECTION B-B  
(SEE SHEET 1)  
SCALE 1:2



16 1/4-28 STUD, L = 1.25"  
FILE NAME: 7102-101  
SHEET NO.: 2  
DFT. SCALE: 2:1  
MATERIAL: 1/4-28 Threaded Rod, Brass (McMaster-Carr's 98813A029)  
QTY: 120 PER CRYOMODULE  
NOTES:

		ITEM		DWG. NO.		DESCRIPTION		G1	G2	G3	REMARKS		REV.	
								QUANTITY						
D	PRINT DISTR.	PLOT DATE: 1/23/08 CAD FILE NAME: 7102-101.idw												
	CR-1	UNLESS OTHERWISE SPECIFIED:  DIMENSIONS ARE IN INCHES; TOLERANCES ON: .0 ± .02 .00 ± .010 .000 ± .005 FRACTIONS ± 1/32 ANGLES ± 0.5° ALL SURFACES 		<div> CORNELL UNIVERSITY Floyd R. Newman Laboratory Ithaca, NY 14853</div> <div>ERL INJECTOR CRYOMODULE ASSEMBLY, STEP 12 ASSEMBLY, STEP 12: SECTIONS A-A, B-B, 1/4-28 STUD.</div>										
A	REV.	CHECKED BY: VM		DRAWN BY VM		DRAWN FOR M.Liepe		DATE 1/3/08		SCALE D		7102-101 SH. NO. 2 OF 2		REV. A
		APPROVED BY: VM												